



CREATING RESPONSIBLE CITIZENS

A PROGRAMME OF THE

TOSKAN CASALE
FOUNDATION

MANAGED IN
SCOTLAND BY


Wood Family Trust

ACTIVE CITIZENSHIP PROGRAMME

The Youth and Philanthropy Initiative (YPI) is an **active citizenship programme** that raises awareness among young people about philanthropy. Originating in Canada, YPI is now an international programme and is currently being delivered in 55 schools across Scotland. So far it has reached **80,000 pupils around the world** providing them with the skills and confidence to grant over **£2 million to hundreds of local charities**. The programme was launched in Toronto by The Toskan Casale Foundation, and is funded and managed in Scotland by the Wood Family Trust.

DEVELOP AND SUPPORT



YPI AIMS

- To develop the next generation of responsible citizens and effective contributors.
- To raise awareness of the work of local charities and channel funds to them effectively
- To develop the skills and confidence of young people through the hands-on experience of philanthropy



RESEARCH, VISIT, PRESENT

The YPI Process



Assembly

Pupils learn how the programme works from YPI staff.



Form teams

In teams, pupils identify the social needs of their local community.



Research

Teams research and analyse a number of local charities in their community.



Awards

Each team prepares and delivers a presentation in front of a panel of judges. The most discerning presentation group is awarded £3000 to grant towards their charity.



Contact visit

Teams contact and visit their charity to interview the staff and beneficiaries.

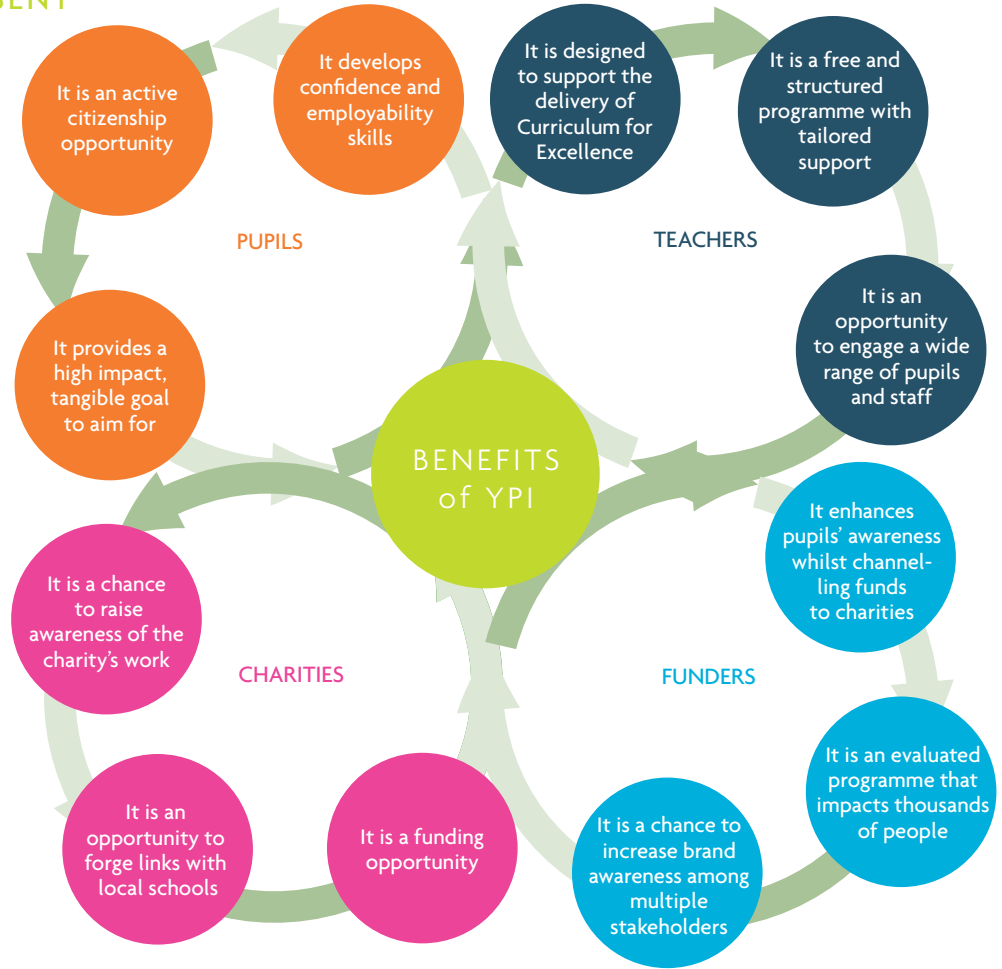


Choose a charity

Teams select the charity they believe best addresses their chosen issue.

RESEARCH, VISIT, PRESENT

goypi.org



YPI offers a range of benefits to charities, schools, pupils and funders alike. It channels money to local charities and contributes to a greater culture of giving.

CREATIVE, INNOVATIVE, ENGAGING

'The work done through YPI is invaluable- as there is not only the monetary contribution, but there is a real sense of breaking down barriers between us and the community.'
YPI WINNING CHARITY

'YPI has given us the confidence and the realisation that even at our age we can help to make a difference in our communities. We are able to get a real sense of commitment and responsibility, which is something that is not always possible in school.' YPI PUPIL

'Words cannot describe how passionate and eager the students were to help others around them. They have been a huge inspiration to me.' YPI WINNING CHARITY

'YPI encourages students to think about the real meaning of philanthropy, and recognise that whilst the act of giving money is an important element, all young people can perform philanthropic acts, irrespective of circumstance, by donating their time, expertise and effort.' YPI TEACHER

'WE FUND YPI BECAUSE IT IS ALL ABOUT DEVELOPING YOUNG PEOPLE AND HAS A LONG-LASTING IMPACT'

YPI FUNDER



'Because of YPI I am more aware of my local community. There are those less fortunate than myself living in my area who really need the help and support offered by local charities.'
YPI PUPIL



Key facts and figures about YPI

- Over 10,000 young people have participated in YPI Scotland since September 2007.
- By the end of the 2011/12 school year YPI students in Scotland will have donated over £400,000 to local charities.
- YPI operates in 55 schools across Aberdeen, Aberdeenshire, Perth and Kinross, Edinburgh, Glasgow, East Dunbartonshire & Renfrewshire.
- Approximately 2,000 local charities have been researched by YPI pupils since September 2007.
- YPI was launched in Toronto by Julie Toskan Casale.
- The Wood Family Trust is the principal funder and operational manager of YPI in Scotland.



Wood Family Trust

Key facts about the Wood Family Trust

- The Wood Family Trust (WFT) was established in 2007 by Sir Ian Wood and his immediate family with the aim to develop and support individuals to become independent, contributing and caring members of society. In order to achieve our aim, WFT is focused on three main programme areas: Making Markets Work for the Poor in Sub Saharan Africa, Volunteering Overseas & Global Citizenship and Developing Young People in Scotland.
- YPI forms part of our 'Developing Young People in Scotland' portfolio. The objective of this programme is to invest in the future of Scotland by ensuring that we have a nation of enterprising young people who have an understanding of citizenship values and a tolerance for others.
- The Wood Family Trust would like to thank Bank of Scotland, the exclusive funder for Greater Glasgow, and Gannochy Trust, the exclusive funder for Perth & Kinross, as well as all other donors and supporters of YPI Scotland.

WHEN DO YOU RECRUIT SCHOOLS?

We recruit on an ongoing basis.

WHICH SCHOOLS CAN PARTICIPATE?

YPI is currently open to secondary schools across Aberdeen, Aberdeenshire, Perthshire, Edinburgh and Greater Glasgow with new regions joining the programme each year.

WHAT YEAR GROUPS CAN TAKE PART?

Any year group from S2 - S6 can participate in YPI.

HOW LONG DOES YPI TAKE TO RUN?

We recommend that schools set aside 8-10 hours worth of lessons to deliver YPI.

WHAT HAPPENS IF MORE THAN ONE TEAM CHOOSE THE SAME CHARITY?

- This is not a problem. Two different teams will deliver very different presentations on the same charity.
- Teachers should step in if the majority of teams are picking the same charity.

DO YOU EVALUATE YPI?

- Yes, we consider monitoring and evaluation to be an essential part of improving YPI as we grow.
- We have commissioned a long term external impact evaluation of YPI in the UK. The final report is due in Spring 2012.

WHICH SUBJECT IS YPI GENERALLY DELIVERED IN?

- YPI can be delivered within a number of different subject areas and forums. Across Scotland there are great examples of YPI delivery within Guidance, RMPS and Business Studies. In addition, a number of excellent cross-curricular models have evolved in partnership with English, Drama, ICT and Art. We are flexible about where YPI is delivered provided that a whole year group is able to participate.
- YPI sits ideally within Curriculum for Excellence, with obvious synergies across Health & Wellbeing, Social Studies, Expressive Arts, RME, and Literacy & Numeracy.

WHAT SUPPORT IS THERE FOR TEACHERS?

- Our YPI Regional Facilitator Team delivers information sessions for teachers, an assembly to launch YPI for pupils, and ongoing support throughout the programme until the final presentations.
- We provide flexible resources for teachers including the YPI Resource Guide, Student Workbook, PowerPoints and supporting documents.

WHAT ISSUES DO PUPILS GENERALLY CHOOSE TO FOCUS ON?

- In the past, teams have won grants for many different charities including youth centres, stroke support groups, elderly day care, hospices and support schemes for disabled people.
- Our only condition is that pupils focus on social service issues.



If you want to find out more about how you can get involved please contact the YPI Scotland Coordinator:

Jonathan Christie
YPI Scotland Coordinator
John Wood House
Greenwell Road
Aberdeen AB12 3AX

Tel: 01224 532541

Email: jonathan.christie@woodgroup.com

For further information about YPI please visit www.GoYPI.org



Trustees; Sir Ian Wood (Chairman), Lady Helen Wood, Garreth Wood, Graham Good. Chief Executive; Jo Mackie
The Wood Family Trust, Scottish Registered Charity No. SCO37957 is the Parent Charity of WFT Africa, registered in Scotland as a company limited by guarantee and having charitable status. Company No. SC361033. Scottish Charity No. SCO4580.